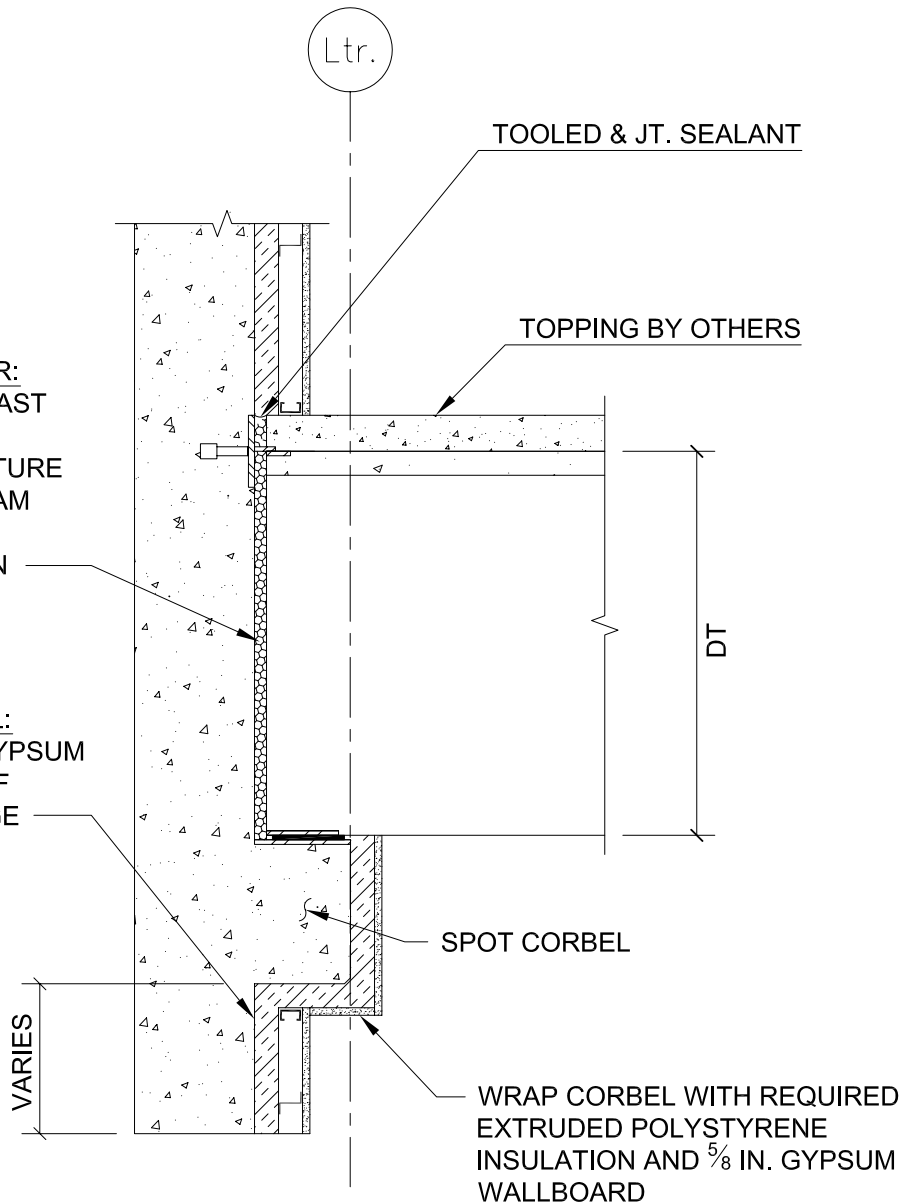


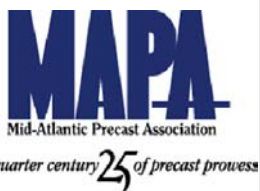
AT WEB, FLANGE AND FLOOR:  
 FILL SPACE BETWEEN PRECAST  
 WEB, FLANGE, FLOOR AND  
 EXTERIOR WALL WITH MOISTURE  
 RESISTANT, FIRE RATED FOAM  
 IN-PLACE EXPANDABLE  
 POLYURETHANE INSULATION

BETWEEN WEB AND CORBEL:  
 EXTEND INSULATION AND GYPSUM  
 WALL BOARD TO BOTTOM OF  
 PRECAST CONCRETE FLANGE



**NOTE:**

The recommendations and details presented are based on specific analyses, engineering judgment, and best available practices at the time of publication. Performance testing of the details has not been performed. Detail drawings are provided in order to assist competent professionals in the detailing of the building insulation envelope. Reinforcing designations, structural connections, wythe thickness, and insulation indicated in drawings are to be used for reference only and are not intended to substitute for project specific judgment. MAPA makes no warranties, either written or implied, of details provided.



**Total Precast Buildings**

**Typical Load Bearing Spandrel/DT Detail**

Date:  
**10JUN04**

Scale:  
**NTS**

Figure No.:

**8**